

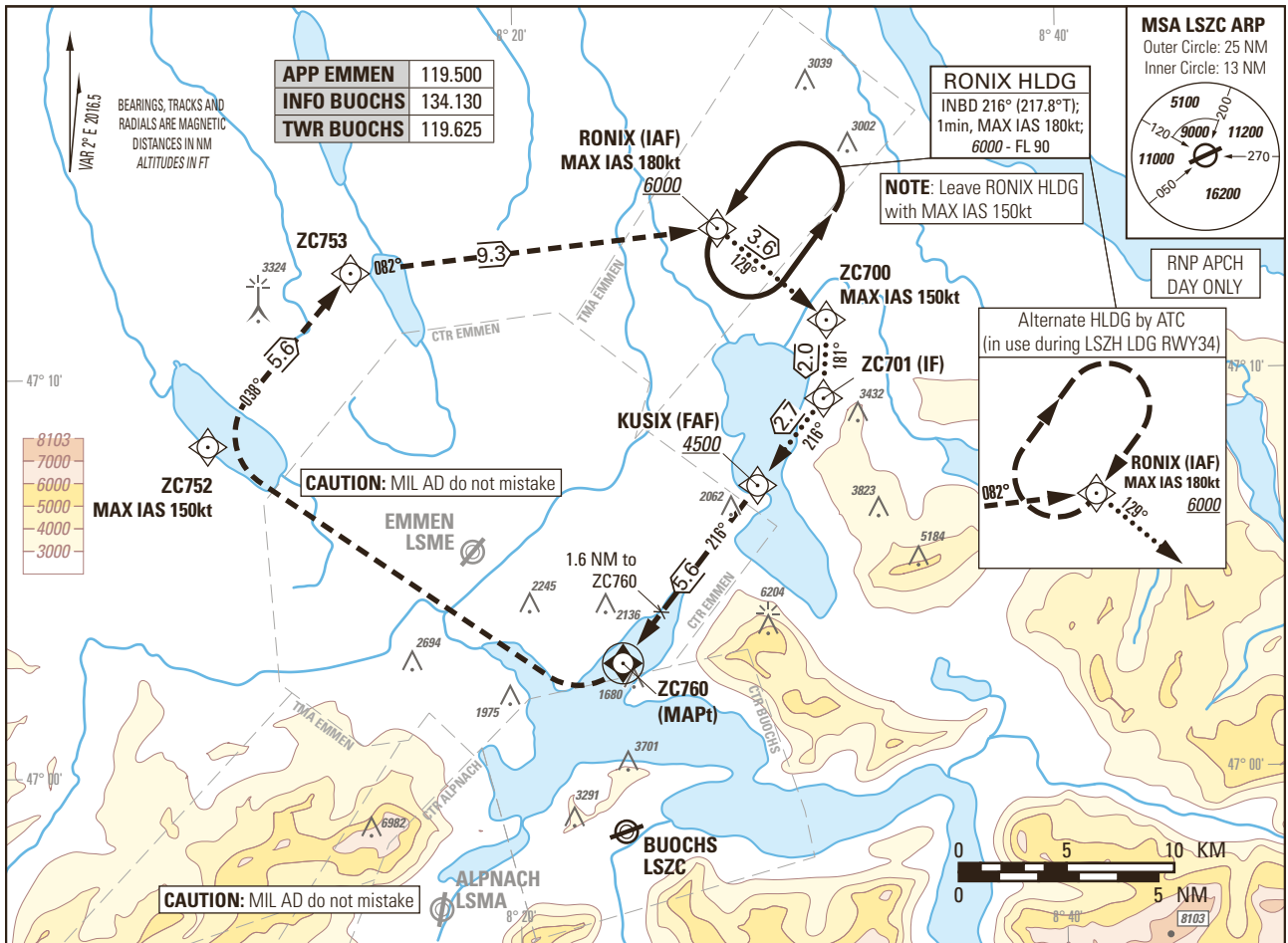
Instrument Approach Chart  
(IAC) - ICAO

AD ELEV 1475ft

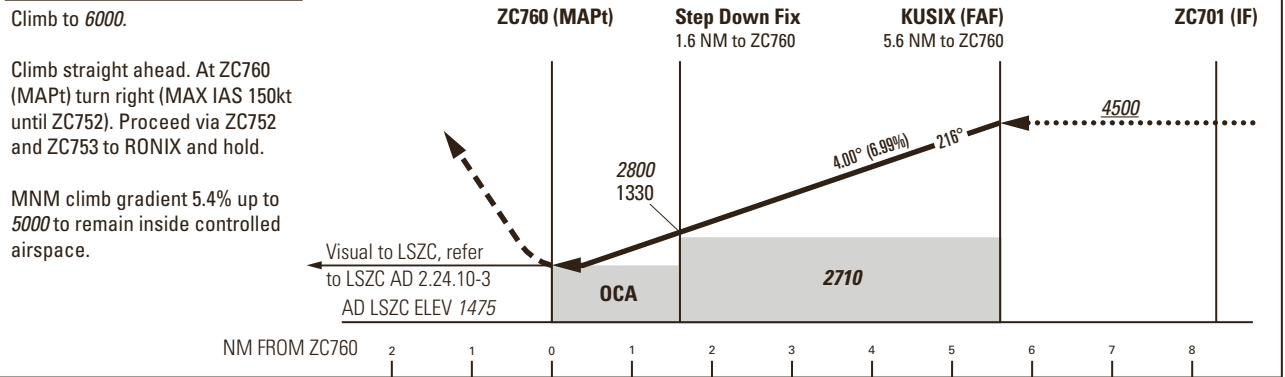
TRANSITION LEVEL by ATC  
TRANSITION ALTITUDE 7000

BUOCHS LSZC  
RNP A  
ACFT CAT A/B

**PROCEDURE LIMITED TO PILOTS OPERATING FOR PILATUS AIRCRAFT LTD**



**MISSED APPROACH**



Missed APCH climb gradient	A	B
	OCA(H) <sup>1)</sup> LNAV	
2.5%	2350 (880)	
5.4% to 2400	2280 (810)	
	MDA(H) <sup>1)</sup>	
	3500 (2030) <sup>2)</sup>	
2.5%	2350 (880) <sup>3)</sup>	
5.4% to 2400	2280 (810) <sup>3)</sup>	

**CAUTION**  
This is not a standard APCH angle.

**REMARK**  
- VIS APCH following ZC760 according LSZC AD 2.24.10-3.

**NOTE**  
<sup>1)</sup> OCH/MDH above AD ELEV.  
<sup>2)</sup> CTR EMMEN 2 not active.  
<sup>3)</sup> CTR EMMEN 2 active.

Dist to ZC760	1	2	3	4	5
	ALT	2550	2970	3400	3820

ROD	GS kt	90	110	130
	FT/MIN	637	779	921

COR: chart title (WEF 23APR2020)

THIS PAGE INTENTIONALLY LEFT BLANK